

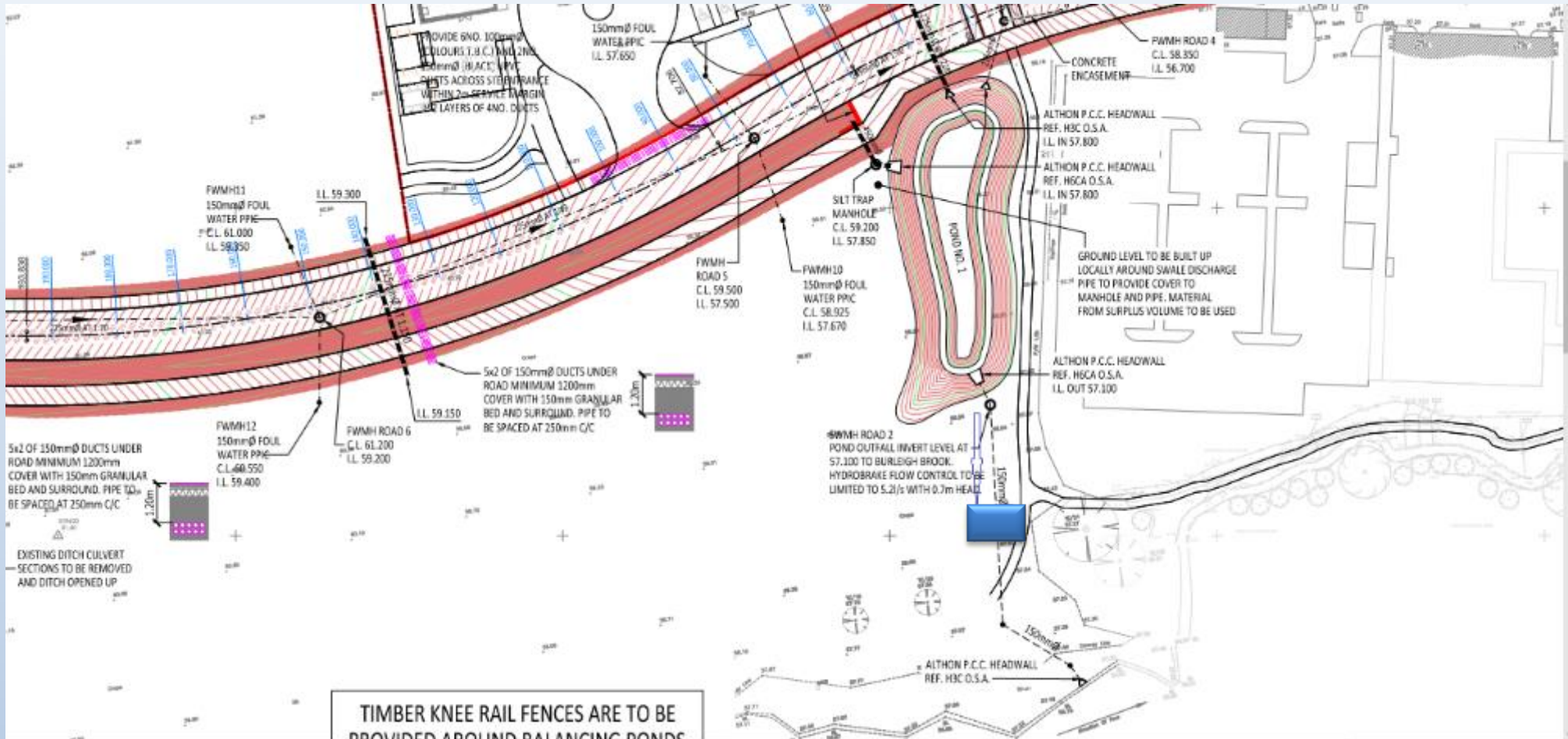


WasteWater Meter WWM™ Installation Guide

Dynamic Flow Technologies

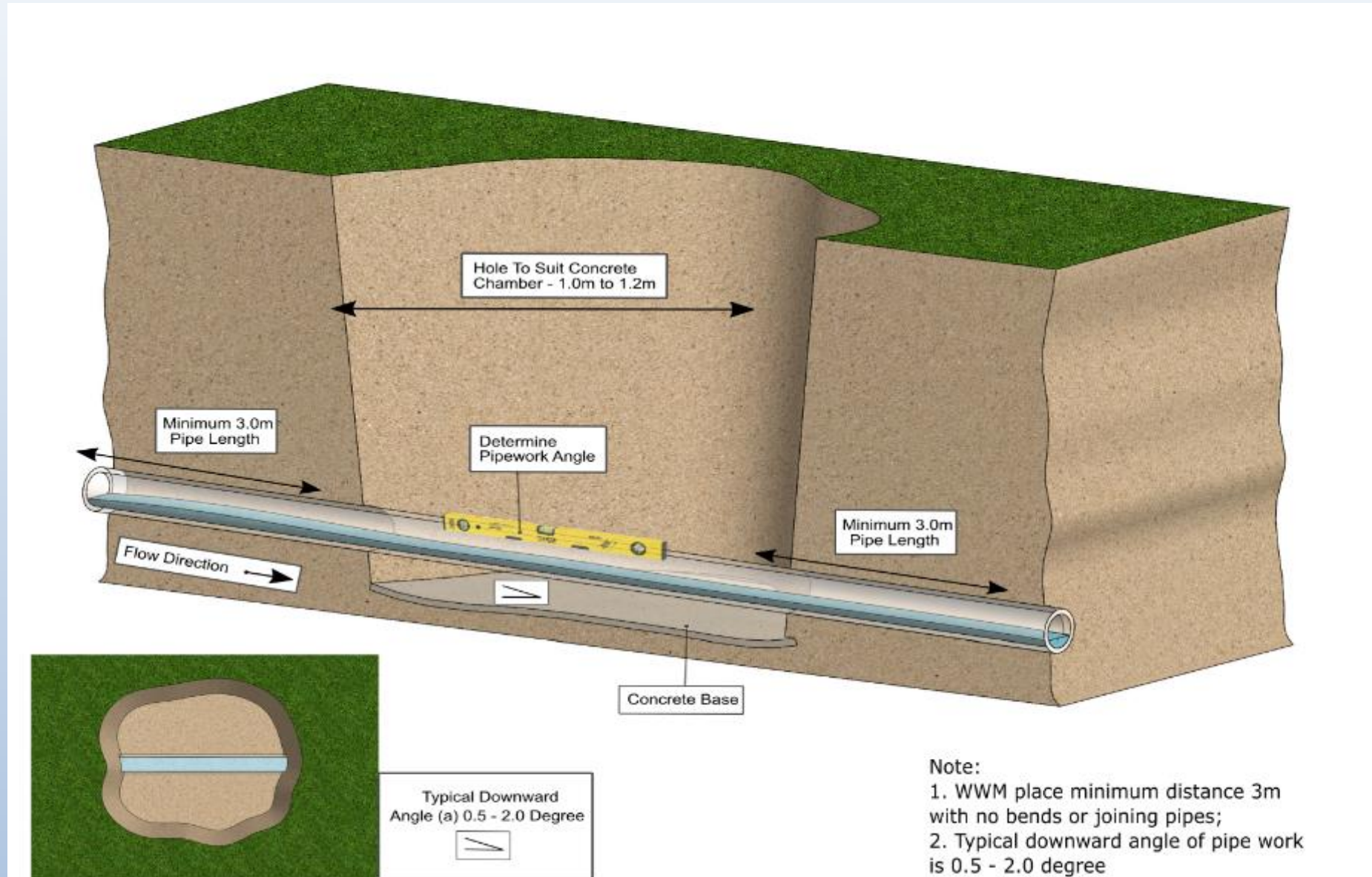


Drainage map & site survey



The initial stage of the installation is to find out the proper location of installing the meter. The ideal location of placing the WWM into the pipe is at least 3 meters away from bends and flow junction points. To detect working area before the construction starts.

Chamber Construction & Measurements



Chamber construction



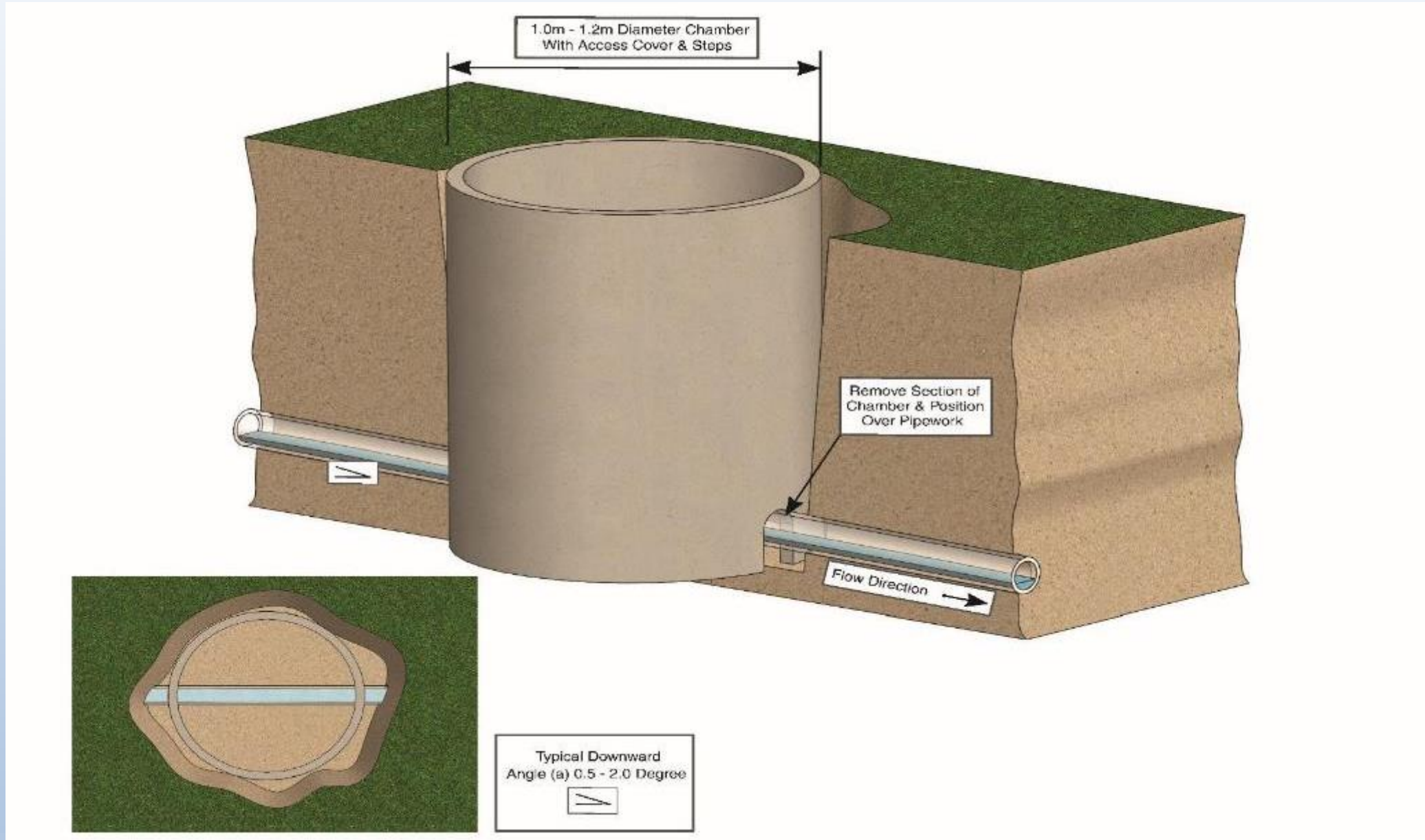
Excavate to soft area pit over existing storm pipework and set-aside arisings neatly on site, not exceeding 1.7M deep.

Find the existing pipework



To bottom of pit construct 150mm thick concrete base, finished level to be 200mm below pipe level.

Manhole Construction

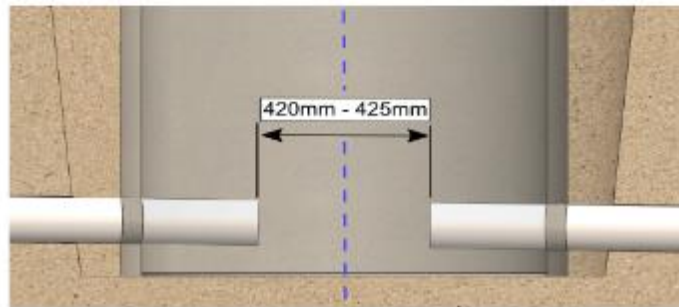
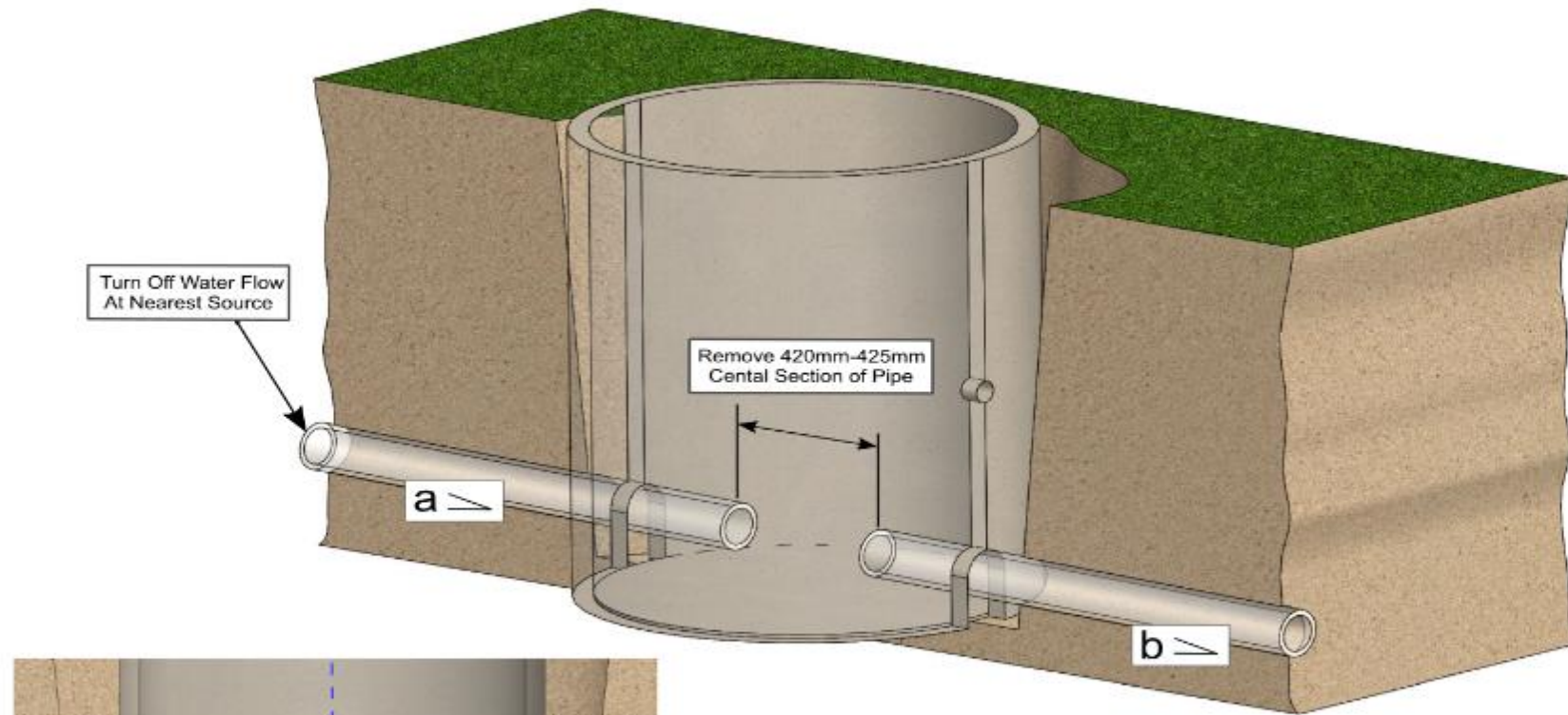


Construct a concrete manhole



Construct concrete 1200 diameter ring manhole complete with medium duty cover and frame, surrounded with concrete.

Cut the WWM Length of Pipe



Downward Angle \triangleright
 $a = b = 0.5^\circ - 2.0^\circ$

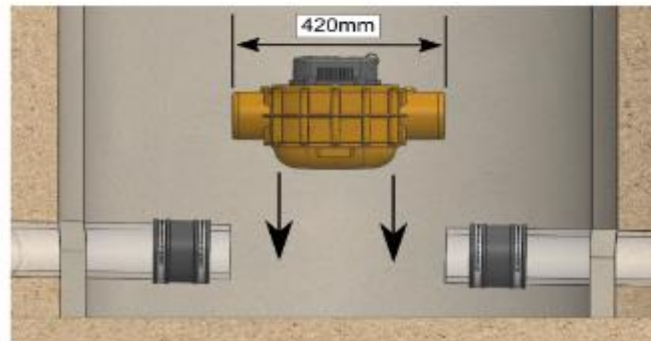
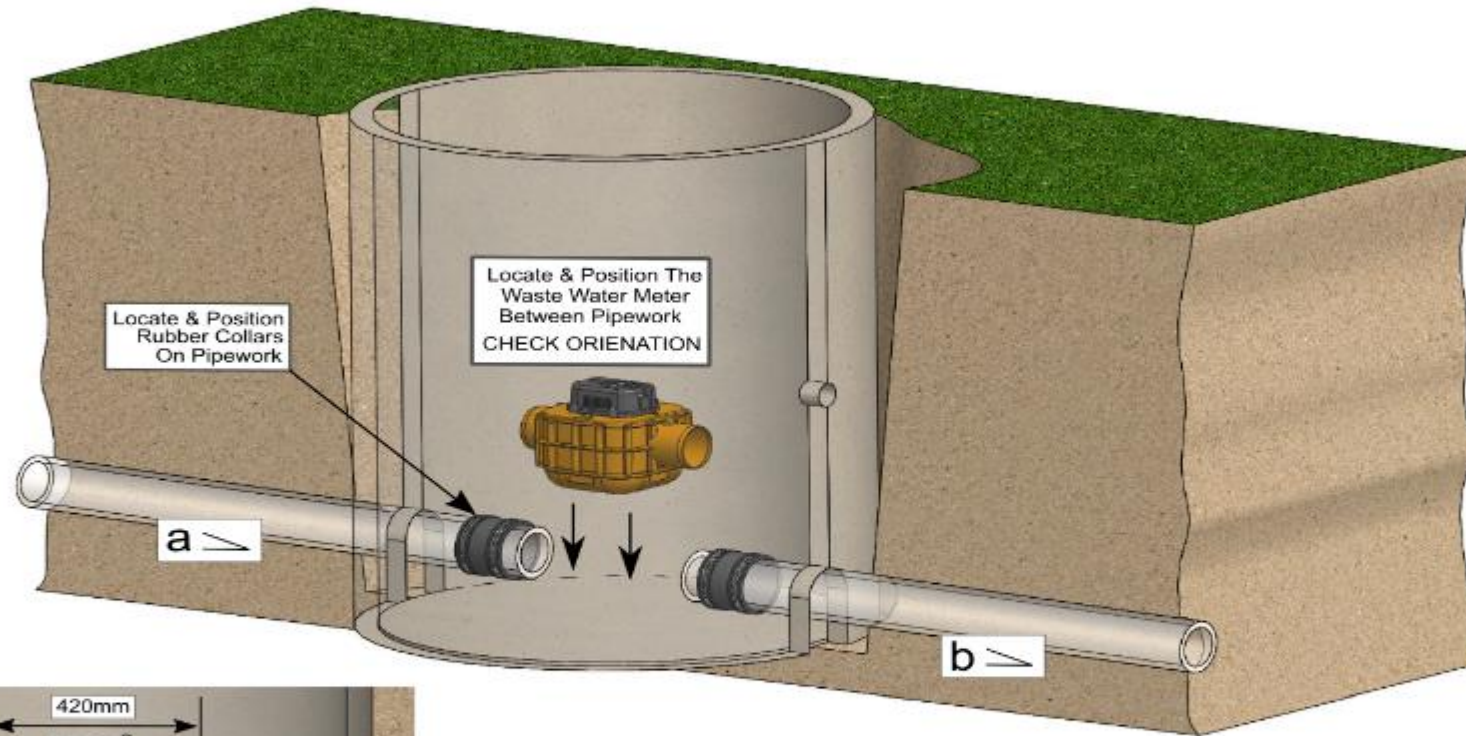
Note:

1. Two sections of pipework must maintain the same downward angle: Angle $a =$ Angle b ;
2. Turn off the water flow before cutting the pipe;
3. The length of the WWM is 420mm

Cut the pipework and fit the WWM



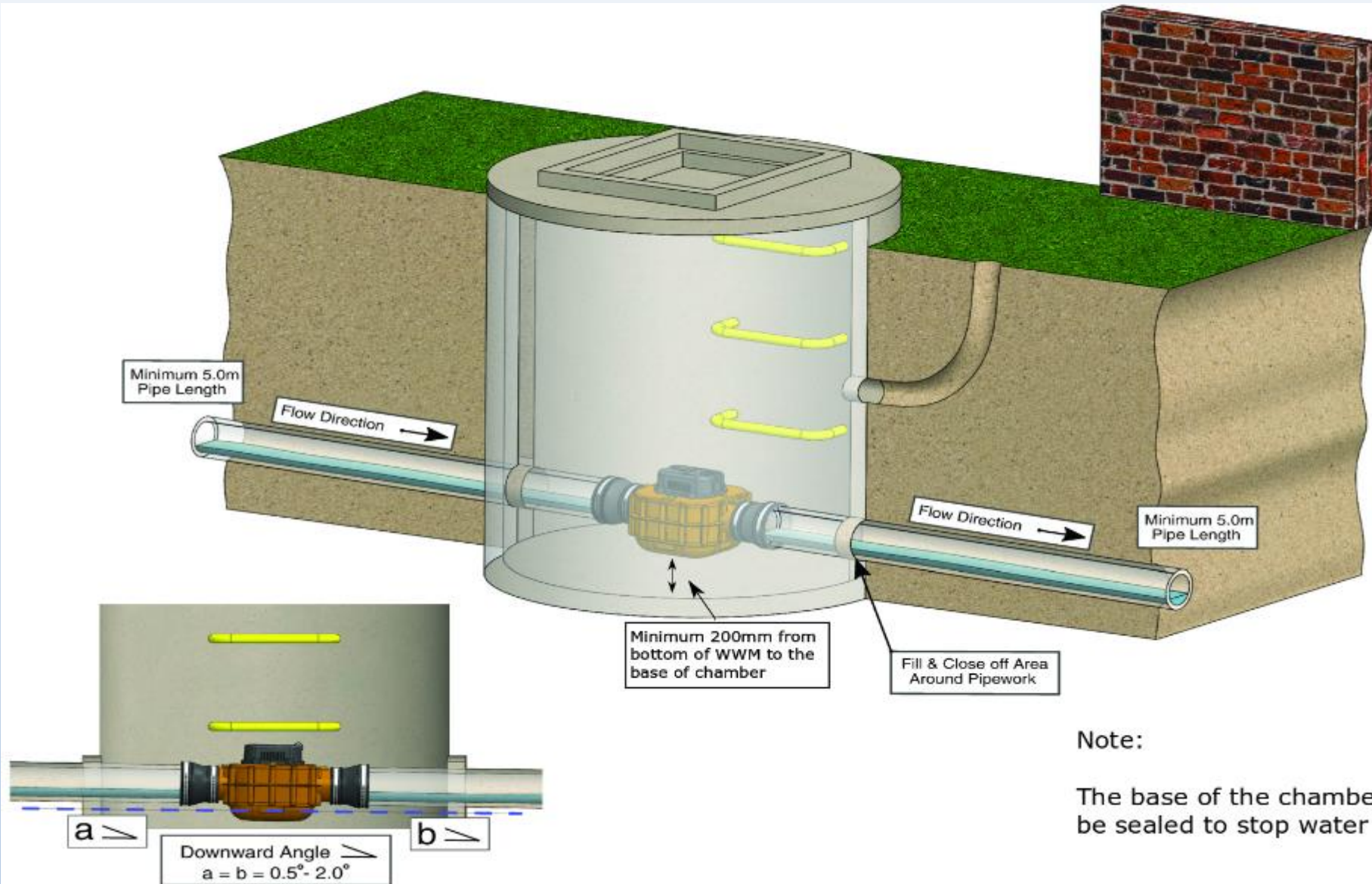
Locate & Position the WWM



Downward Angle \searrow
 $a = b = 0.5^\circ - 2.0^\circ$

Note:
Check the direction of the WWM before install it. The arrow on the WWM should be the same as the flow direction.

Installed WWM™



Note:

The base of the chamber shall be sealed to stop water ingress.

Installed WWM™

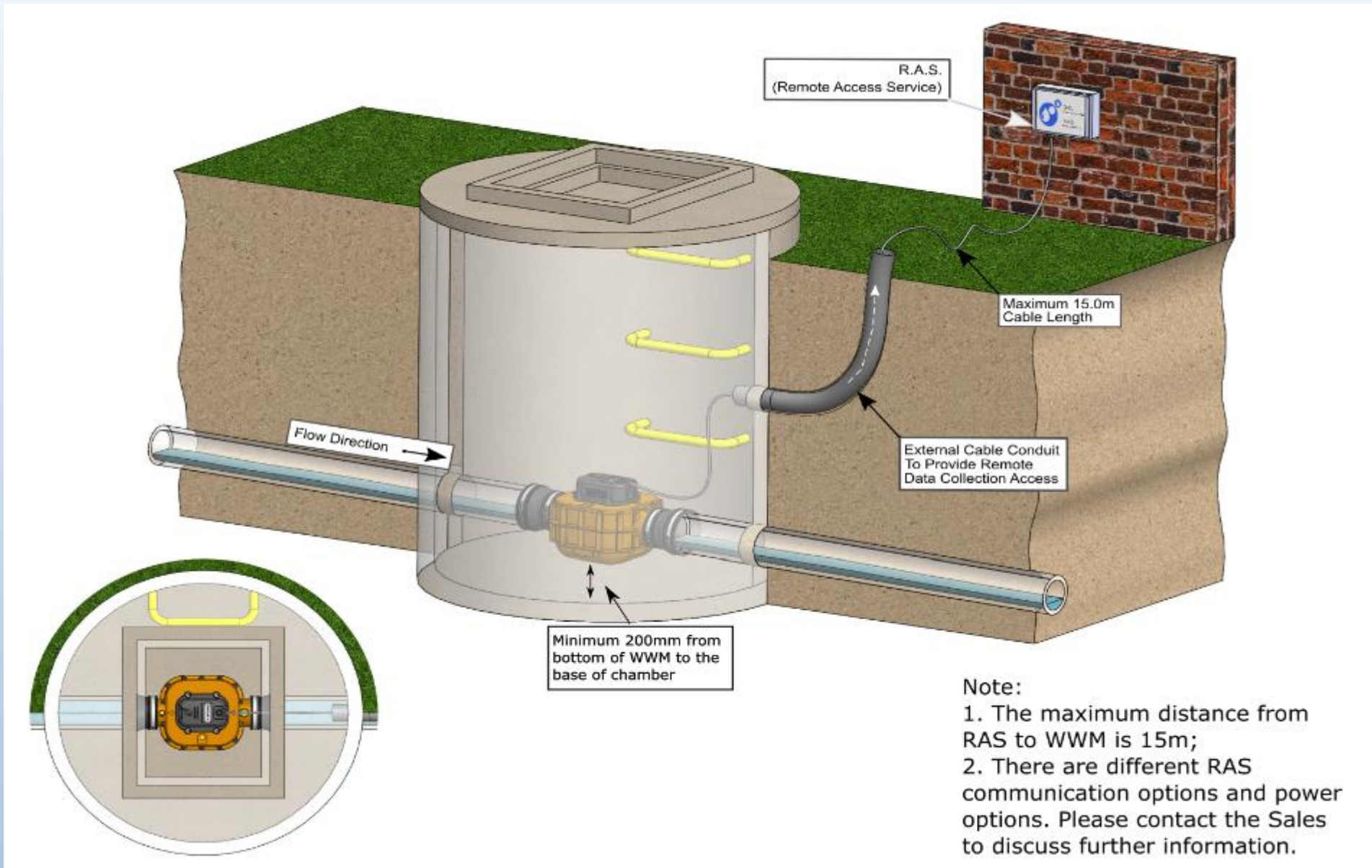


Completed manhole



Complete with supply and fit 2M of 75mm duct complete with draw-cord, break through side of manhole.

Connect WWM™ to RAS



RAS and Battery Backup



RAS & Sampler

