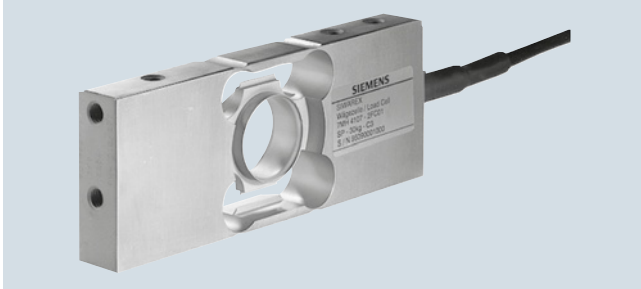


### Overview



The platform load cell SIWAREX WL260 SP-S SB is excellently suited for use in platform scales with dimensions up to and including 350 x 350 mm (13.78 x 13.78 inch). It is approved for use in Class III commercial scales with maximum divisions of  $n_{\max}$  to 3 000d.

### Design

The measuring element is made of stainless steel, hermetically sealed and has a calibrated output current. The load cell meets the IP68 degree of protection.

### Technical specifications

SIWAREX WL260 SP-S SB	
<b>Possible applications</b>	<ul style="list-style-type: none"> <li>Platform scales</li> <li>Small conveyor scales</li> </ul>
<b>Type</b>	Platform load cell
<b>Loads</b>	
Rated load $E_{\max}$	<ul style="list-style-type: none"> <li>6 kg (13.23 lb)</li> <li>12 kg (26.46 lb)</li> <li>30 kg (66.14 lb)</li> <li>60 kg (132.28 lb)</li> </ul>
Min. initial loading $E_{\min}$	0 % $E_{\max}$
Max. working load $L_U$	150 % $E_{\max}$
Break load $L_d$	300 % $E_{\max}$
Max. lateral load $L_{lq}$	100 % $E_{\max}$
<b>Measurement characteristic values</b>	
Rated measuring path $h_n$ at	
• $E_{\max} = 6$ kg (13.23 lb)	0.24 ± 0.02 mm (0.009 ± 0.0008 inch)
• $E_{\max} = 12$ kg (26.46 lb)	0.19 ± 0.01 mm (0.008 ± 0.0004 inch)
• $E_{\max} = 30$ kg (66.14 lb)	0.15 ± 0.01 mm (0.006 ± 0.0004 inch)
• $E_{\max} = 60$ kg (132.28 lb)	0.22 ± 0.03 mm (0.009 ± 0.0011 inch)
Rated characteristic value $C_n$	2.0 ± 0.2 mV/V
Tolerance D0 of zero signal	< ± 2.0 % $C_n$
Max. scale interval $n_{lc}$	3 000
Min. scale interval $V_{\min}$ at	
• $E_{\max} = 6, 12, 30, 60$ kg (13.23, 26.46, 66.14, 132.28 lb)	$E_{\max}/15\ 000$
Combined error $F_{\text{comb}}$	≤ ± 0.02 % $C_n$
Deviation $F_v$	≤ ± 0.02 % $C_n$
Creepage error $F_{cr}$	
30 min	≤ ± 0.025 % $C_n$
Temperature coefficient	
• Zero signal $T_{K0}$	0.009 % $C_n/10$ °C
• Characteristic value $T_{Kc}$	0.009 % $C_n/10$ °C

### SIWAREX WL260 SP-S SB

#### Electrical characteristic values

Recommended reference voltage $U_{\text{ref}}$	DC 5 ... 12 V
Input resistance $R_e$	400 Ω ± 20 Ω
Output resistance $R_a$	350 Ω ± 3.5 Ω
Insulation resistance $R_{is}$	5 000 MΩ at 50 V DC

#### Connections and ambient conditions

Sensor material (DIN)	Stainless steel
Max. tightening torque of fixing screws	10 Nm
Rated temperature range $B_{Tn}$	-10 ... +40 °C (14 ... 104 °F)
Operating temperature range $B_{Tu}$	-35 ... +65 °C (-31 ... +149 °F)
Storage temperature range $B_{Ts}$	-35 ... +65 °C (-31 ... +149 °F)
Degree of protection to DIN EN 60529; IEC 60529	IP68

#### Connection cable

Function	Color
• EXC + (supply +)	Green
• EXC - (supply -)	Black
• SIG + (measured signal +)	White
• SIG - (measured signal -)	Red
• Sense + (sensor line +)	Yellow
• Sense - (sensor line -)	Blue
• Shield (not connected to housing)	Transparent

#### Certificates and approvals

Accuracy class according to OIML R60	C3
--------------------------------------	----

### Selection and ordering data

#### Load cell type WL260 SP-S SB

Legal-for-trade according to OIML R60 to 3 000d, connection cable 6 m (19.69 ft)

Click on the Article No. for the online configuration in the PIA Life Cycle Portal.

#### Rated load

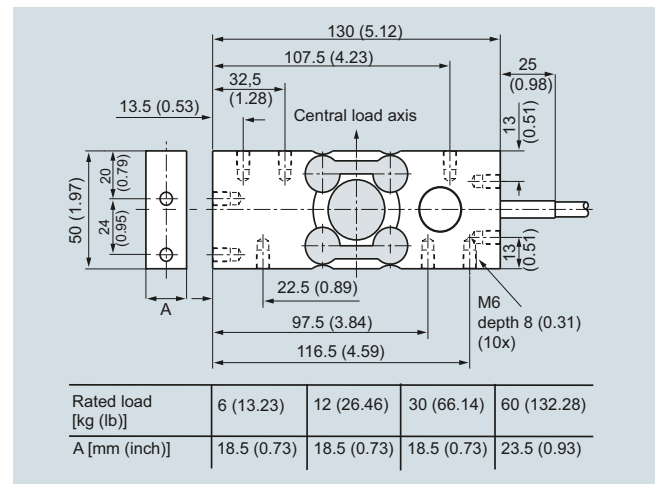
- 6 kg (13.23 lb)
- 12 kg (26.45 lb)
- 30 kg (66.14 lb)
- 60 kg (132.28 lb)

Article No.

7MH5117-

D 0 0

### Dimensional drawings



SIWAREX WL260 SP-S SB, dimensions in mm (inch)