

● Characteristics

0300 - LOAD MEASUREMENT - FORCE -



- Measurement ranges:	0...50 kg up to 0...300 kg
- Input resistance:	406 ±4 Ω
- Output:	2 mV/V
- Output resistance:	350 ±3 Ω
- Insulation resistance:	> 5000 MΩ (at 50 VDC)
- Accuracy:	±0,02% of terminal value
- Operating temperature:	-20...+65 °C
- Protection class:	IP67
- Material:	Aluminum alloy
- Supply voltage:	10 VDC
- Connection:	Polyurethane cable, 2m

● Technical Data

Input

Measurement ranges: 0...50 up to 0...300 kg
 Input resistance: 406 ±4 Ω

Output

Output signal: 2 mV/V
 Output resistance: 350 ±3 Ω

Accuracy

Linearity / hysteresis: ±0,02 % of terminal value
 Repeatability: ±0,02 % of terminal value
 Creepage: ±0,02 % of terminal value
 Temperature coefficient: of span: ±0,02 % of measurement range / 10 °C
 of zero point: ±0,02 % of measurement range / 10 °C
 Zero point error: 0,2 bis 1,5 % of terminal value

Supply

Excitation current: Output signal is: 2 mV/V ±0,01 %
 Insulation resistance: > 5000 MΩ at 50 VDC

Power supply unit: recommended supply: 10 VDC
 allowed supply: approx. 6-18 V AC / DC

Environmental Conditions

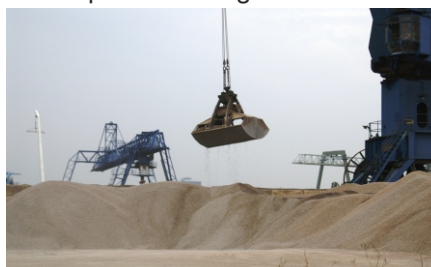
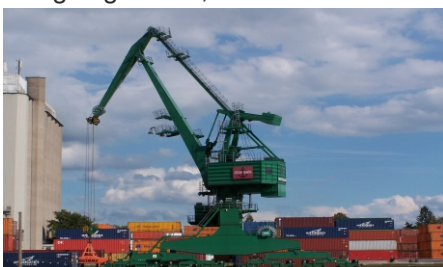
Temperature: Compensated range: -10...+40 °C
 Operating range: -20...+65 °C

Mechanics

Dimensions: 40 x 150 x 35 mm
 Material: Aluminum alloy
 Valid overpressure limit: max. 120 % of nominal load
 Protection class: IP67

● Applications

The load cell SPW6E for excentric load input is suitable for force measurement applications in which the exact weight of a load has to be determined, even if the load's center of mass lies outside the load cell's center. The flexible and robust design is especially suitable for the application range of platform weighing scales, tank weighing scales, band scales and electronic price labelling scales.

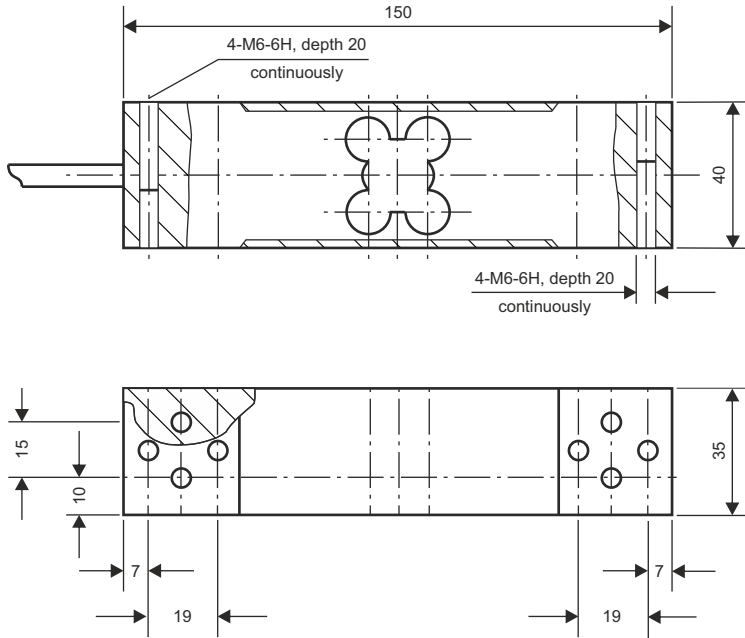


● Technical Data (Continued)

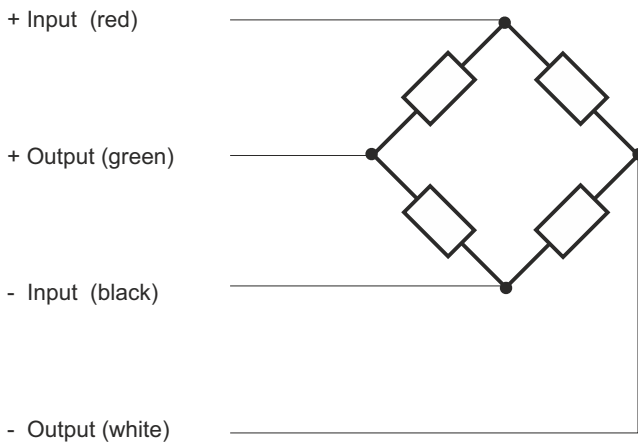
Mechanics (Continued)

Connection: 2 m connection line, shielded (polyurethane)
 +Input (red) / -Input (black) /
 +Output (green) / -Output (white)

● Dimensions (in mm)



● Electrical Connection



● Order Code

C S X X X X X X X X

Output:	2 mV/V ±0,01 %	0								
Measurement range:	0...50 kg	0								
	0...60 kg	1								
	0...100 kg	2								
	0...150 kg	3								
	0...200 kg	4								
	0...300 kg	5								
Material:	Aluminum alloy	0								
Special model:	No								0	
	Yes (please specify)								1	