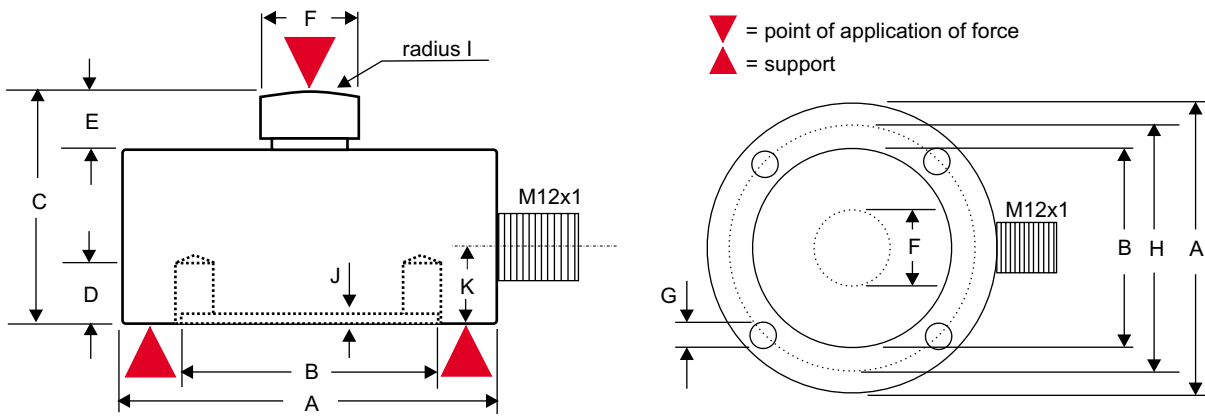


Dimensions, technical data

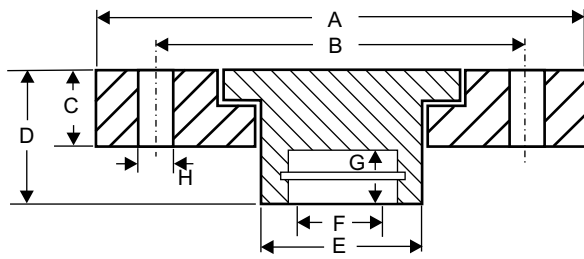


Capacity [kN]	ØA	ØB	C	D	E	ØF	G	ØH	I	J	K
1 / 2 / 5 / 10	49,5	34	30	8	7	13	M5	42	60	1,3	10
20 / 50	89,5	55	48	14	12,5	25	M10	70	100	2,5	17,5
100 / 200	115	68	60	16	12,5	32	M12	90	180	1,8	23
500 / 1000	150	97	80	20	15	44	M16	125	270	4,5	32

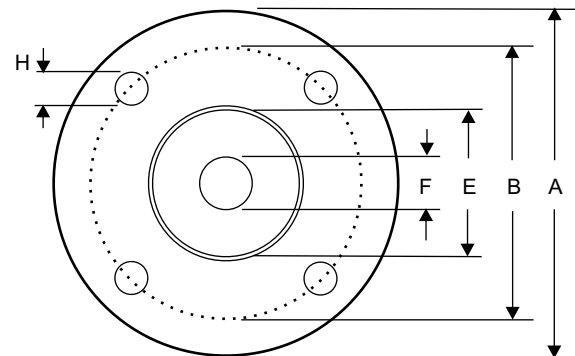
All dimensions in mm

Drilled holes G are turned by 90°

Application of force (thrust piece and mounting flange)



Range [kN]	A	B	C	D	E	F	G	H
1...10	89	70	12	21	37,9	13,6	6	8,5
20...50	89	70	12	21	37,9	25,7	10	8,5
100...200	115	90	14	28	47,9	33	10	12,5
500...1000	149	120	18	50	81,9	46	12	16,5



Drilled holes H are turned by 90°

Technical data

Capacity

size 1	1 / 2 / 5 / 10 kN
size 2	20 / 50 kN
size 3	100 / 200 kN
size 4	500 / 1000 kN
safety to overload	working load 130% of end scale value limit load 150% of end scale value breaking load > 300% of end scale value

Output

sensitivity	2 mV/V
measuring path	< 0,3 mm
bridge resistance output	700 ohms
bridge resistance input	750 ohms
insulation	> 500 Mohms at 100 VDC

Ambient conditions

operating temperature compensated	-10...+70°C
operation temperature	-30...+85°C
storing temperature	-50...+90°C

Accuracy

error	± 0,1% of end scale value
temp.-coeff. at nominal load	0,005% of end scale value / 1K
temp.-coeff. at zero load	0,005% of end scale value / 1K
creeping error	0,06% of end scale value / 30 min
repeatability	< 0,1% of end scale value

Supply

bridge supply	2...12 VDC
maximum supply	15 VDC

Mechanics

material	Armco stainless steel
protection	IP 67
connection	3 m cable with free wires (standard) MIL plug D3899/20WA35PN (option) Canon plug MS3102 E169P (option) M12x1 plug RSF4 (option)