

### Pulsation dampener

#### Design

with lateral setting spindle  
 Connection G 1/2 (specify deviations)  
 in brass up to 250 bar, in steel up to 600 bar  
 Weight: approx. 0.3 kg

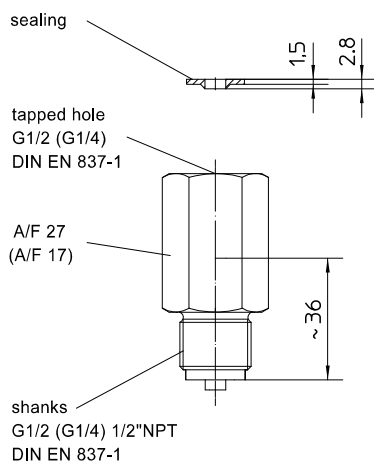
#### Dimensions

A/F 27 / L= 60 mm

#### Order Details

Pulsation dampener		
MF1010		st. steel mat.-no. 1.4571 (316Ti)
MF1020	material	c-steel mat.-no.1.0711
MF1030		brass mat.-no. 2.0406

Order code (example): MF1010



### Zone 0-adapter deflagration flame arrester Typ KF6

#### Design

explosion group IIA, IIB, IIC  
 with a maximum experimental safe gap < 0.5 mm under atmospheric conditions  
 (pressure < 1.1 bar and temperature < 60 °C)  
 Weight: approx. 0.3 kg

#### Dimensions

Dimensions of sealing surface for all types: 36 mm, incl.st. steel sealing

#### Order Details

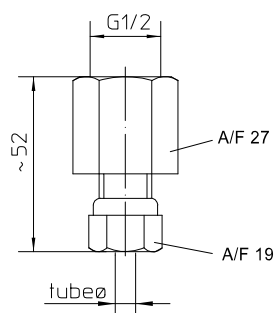
Zone 0 adapter KF6			
MF2100	material	stainless steel mat.-no. 1.4571 (316Ti)	
		instrument	process
A11	connection	G1/2	G1/2
A22		G1/4	G1/4
A13		G1/2	1/2" NPT

Order code (example): MF2100 - A11

## Threaded coupling for pressure gauges

### Design

for the transition to clamped cone pipe connection  
 (ex stock for 6 mm, 8 mm, 10 mm and 12 mm pipe diameters)  
 Instrument connection G1/2  
 Weight: approx. 0.2 kg



### Dimensions

A/F 27 / L= 45 mm

### Order Details

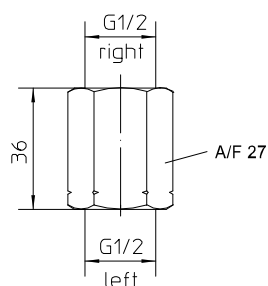
Threaded coupling for pressure gauges		
MR2010	material	st. steel mat.-no. 1.4571 (316Ti)
MR2020		c-steel mat.-no. 1.0711
MR2030		brass mat.-no. 2.0406
A11	for pipe diameters	6 mm
A21		8 mm
A31		10 mm
A41		12 mm

Order code (example): MR2010 - A21

## Tension bush per DIN 16283

### Design

Thread left/right G1/2 (specify deviations)  
 approx. ca 0.1 kg



### Dimensions

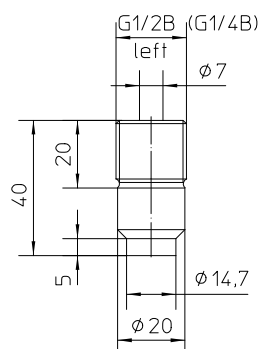
A/F 27 / L= 36 mm

### Order Details

Tension bush per DIN 16283		
MR3010	material	st. steel mat.-no.1.4571 (316Ti)
MR3020		c-steel mat.-no. 1.0711
MR3030		brass mat.-no. 2.0406
A11	thread	left / right G1/2

Order code (example): MR3010 - A11

## Connecting stud per DIN 16282, model 6



### Design

Thread left G1/2 B (specify deviations) with welding stud  
Weight: approx. 0.1 kg

### Dimensions

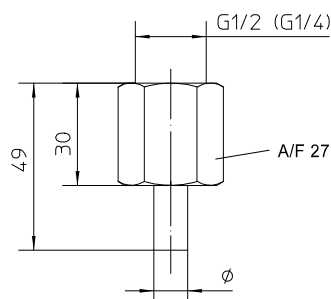
20 mm Ø / L= 40 mm

### Order Details

Connecting stud per DIN 16282, model 6		
MR40	connection	G1/2-LH
MR41		G1/4-LH
10	material	st. steel mat.-no. 1.4571 (316Ti)
20		c-steel mat.-no. 1.0711
30		brass mat.-no. 2.0406

Order code (example): MR4010

## Nippel connections for pressure gauges per DIN 16284



### Design

Thread G1/2 welding stub 12 mm (specify deviations)  
Weight union nut: approx. 0.09 kg  
Weight welding stub: approx. 0.03 kg

### Dimensions

Union nut: A/F 27 / L= 30 mm  
Welding stub: 18 / 12 Ø L= 30 mm (G1/2), 6 Ø L= 30 mm (G1/4)

### Order Details

Nippel connections for pressure gauges per DIN 16284		
MR50	connection	G1/2, Ø 12 mm
MR51		G1/4, Ø 6 mm
10	material	st. steel mat.-no. 1.4571 (316Ti)
20		union nut steel mat.no. 1.0715 welding stub steel mat.-no. 1.1141
30		brass mat.-no. 2.0406

Order code (example): MR5010

## Sealing washers for pressure gauges per EN 837

Gaskets are available at stock. Other dimensions/materials upon request.



### Order Details

Sealing washers for pressure gauges per EN 837		
MS1100	connection	G1/2, M 20 x 1.5
MS1200		G1/4
A2	material	fiber gasket (vulcanized fibre)
A3		st. steel, moulded
A4		copper, solid
A5		Teflon (PTFE)
A6		soft iron, moulded
A8		fiber gasket (A-MA1-0)

Order code (example): MS1100 - A2

## Overload protection up to 600 bar

- eliminates pressure peaks
- maintenance free
- no valve technology

### Design

Overload protection in combination with diaphragm seal for bourdon tube pressure gauges or pressure transmitters.

material: stainless steel

### Measuring ranges

mech. gauges: from 1.6 to 250 bar

transmitters: from 1.0 to 250 bar

### Overload protection

(depending on the nominal pressure of diaphragm seal)

### Ambient temperature

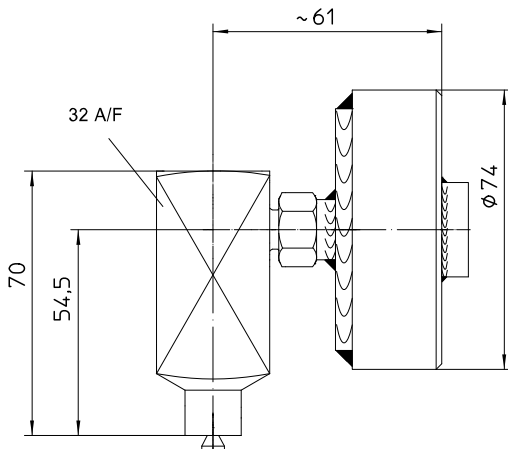
-10...60 °C

### Order Details

Overload protection	
DU3000-A1	overload protected up to 600 bar *

\* the max. nominal pressure of diaphragm seal has to be observed.

connection of measuring instrument directly welded



process connection diaphragm seal  
see product range D5